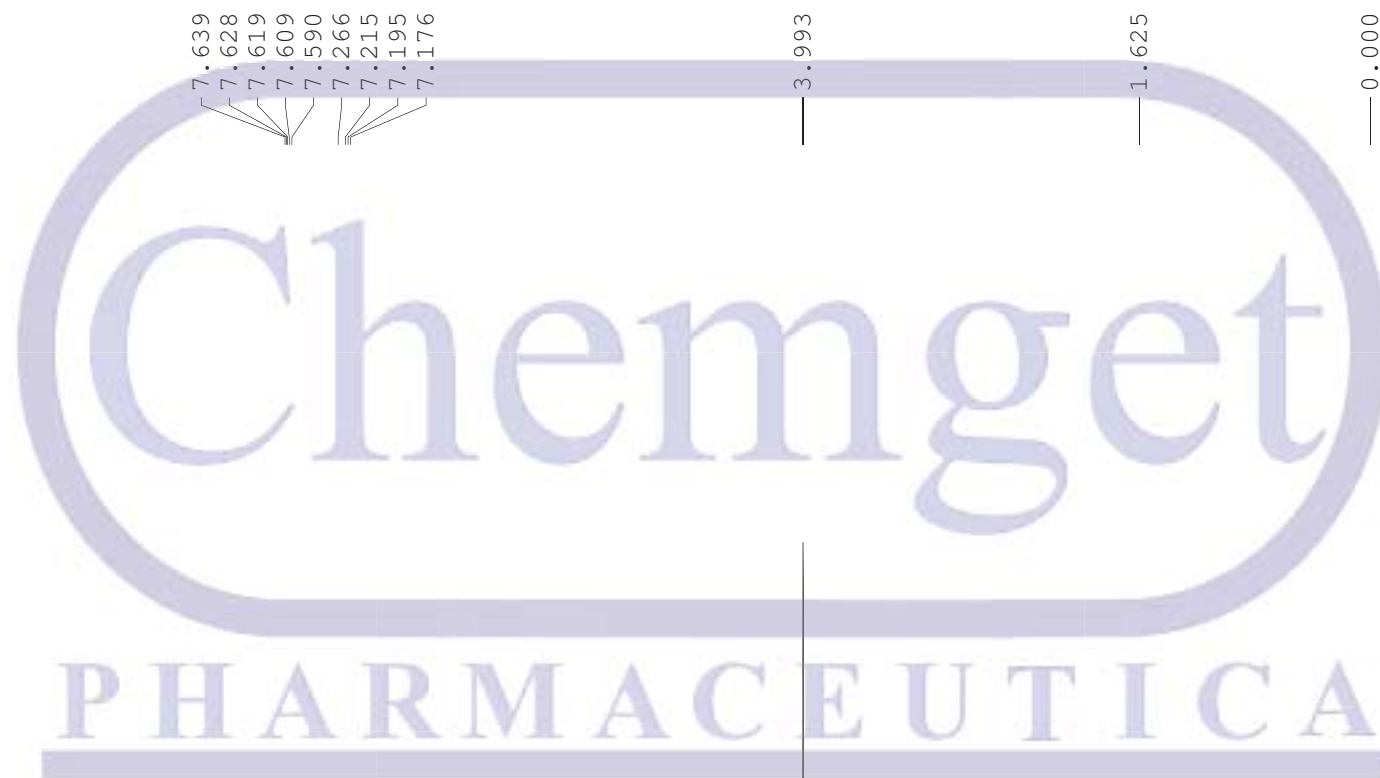
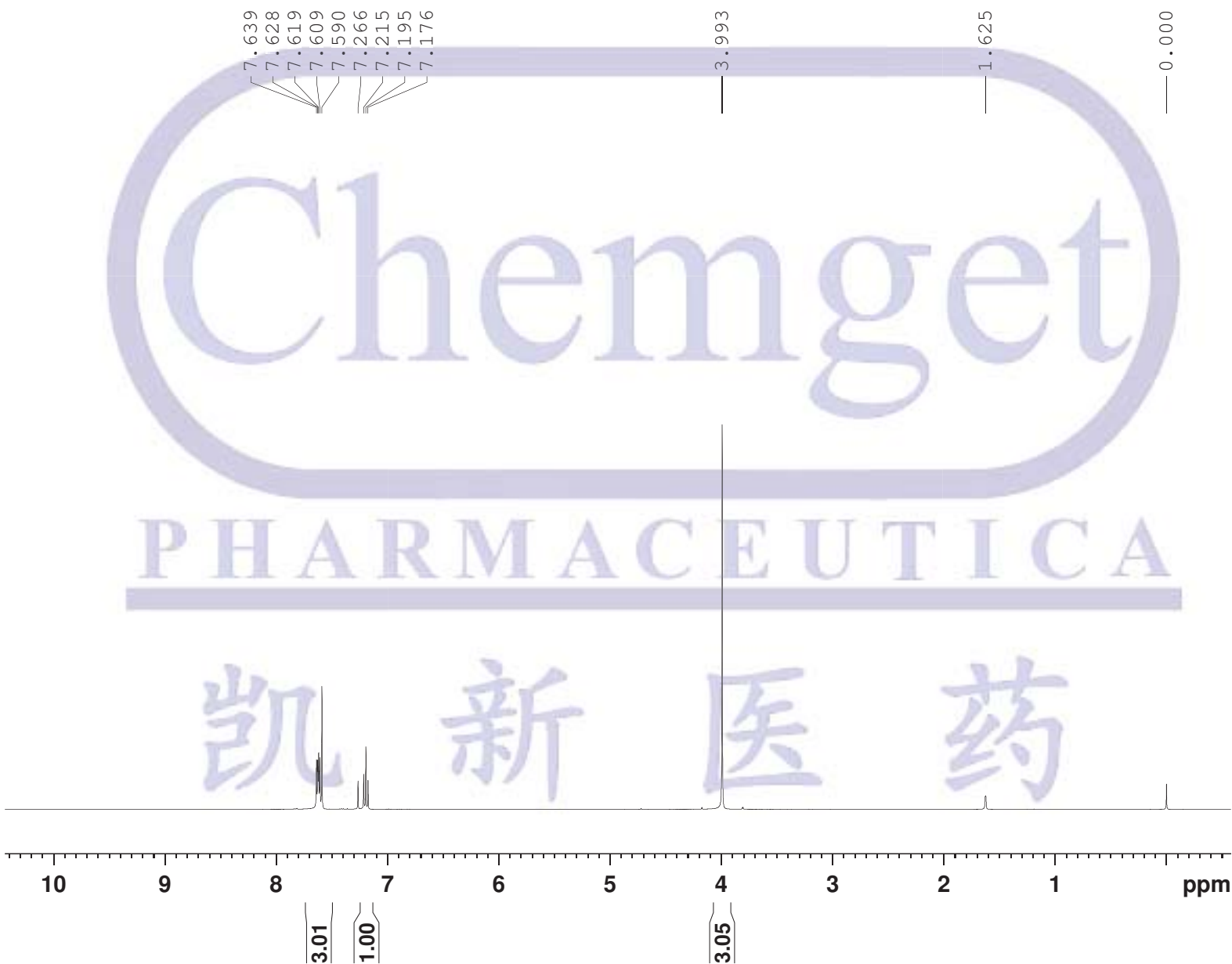


KYM-Me



凯新医药



Current Data Parameters
NAME 02-02-2023
EXPNO 65
PROCNO 1

F2 - Acquisition Parameters
Date_ 20230220
Time 10.55
INSTRUM spect
PROBHD 5 mm PABBO BB-
PULPROG zg30
TD 65536
SOLVENT CDCl3
NS 10
DS 2
SWH 8223.685 Hz
FIDRES 0.125483 Hz
AQ 3.9846387 sec
RG 138.14
DW 60.800 usec
DE 6.50 usec
TE 293.5 K
D1 1.0000000 sec

===== CHANNEL f1 =====
NUC1 1H
P1 13.40 usec
PLW1 16.0000000 W
SFO1 400.1324710 MHz

F2 - Processing parameters
SI 65536
SF 400.1300077 MHz
WDW EM
SSB 0
LB 0.30 Hz
GB 0
PC 1.00